

# Woodridge at Chestnut Valley



*Log Homes on Beautiful  
Chestnut Valley Golf Course*



# Woodridge

## ■ Log homes on the 8<sup>th</sup> fairway

- 8" Hewn Pine
- Casual living
- Worry free use
- Exterior Lawn and Snow Maintenance covered by the association
- Each Parcel is 100% Owned by you
- Low Association Due's
- Just ENJOY!







# Woodridge

## ■ Relax in the comfortable surroundings

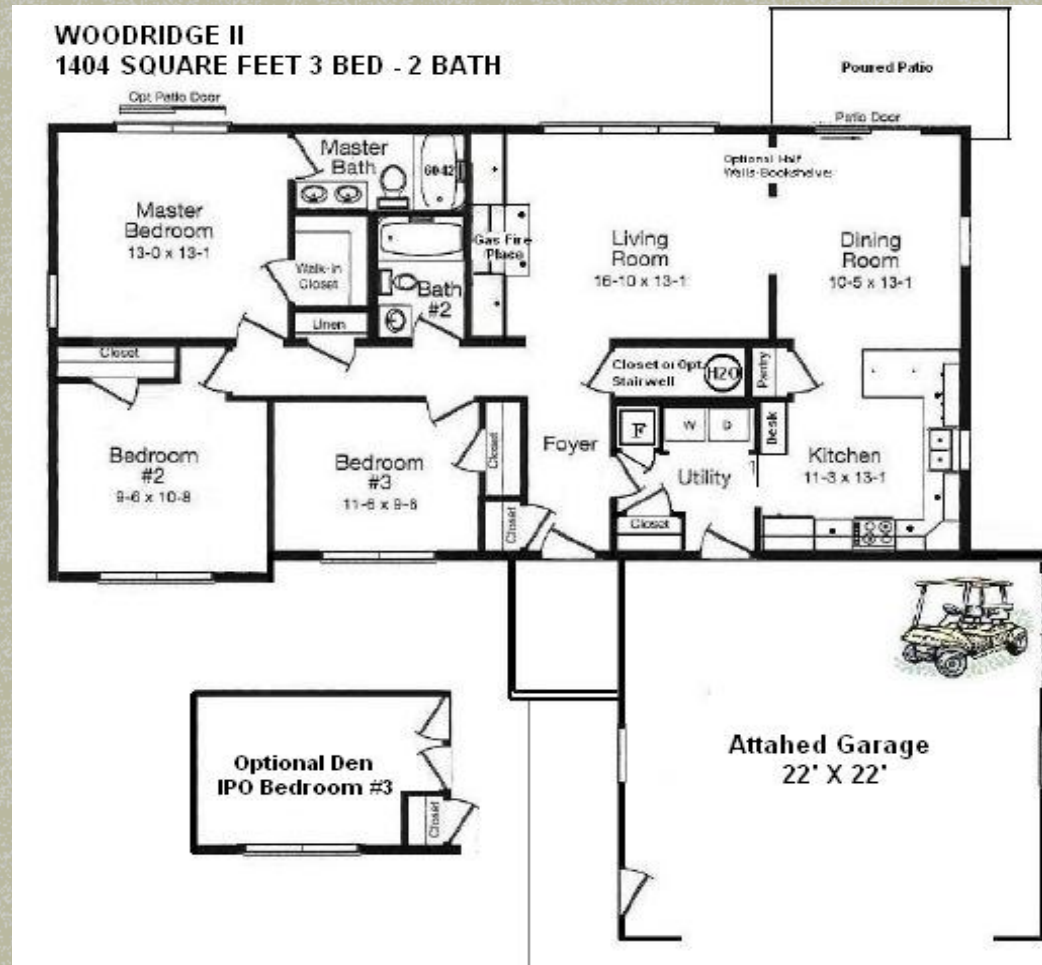
- Leave your stress behind
- Casual living
- Worry free use
- Maintenance covered by association
- Just ENJOY!



# Woodridge

## ■ The Floor Plan

- Up-North living at it's finest
- 8" Hewn Log Exterior
- Three Bedrooms - Two Baths
- Approximately 1404 sq. ft.
- 9' Ceilings
- Floor Coverings
- Kitchen Appliances
- Rear Patio
- Attached Two Car Garage
- Optional O/H Cart Door







# Woodridge - Interior

## ■ Living room with gas fireplace

- Just relax
- Turn on the fireplace on those cool evenings
- Turn on the TV or not
- Relax!





# Woodridge

## ■ Optional wood interiors

- Up-North living at it's finest
- Optional Log & wood interiors







# Woodridge - Interior

## ■ Kitchen – Optional Rustic Modern

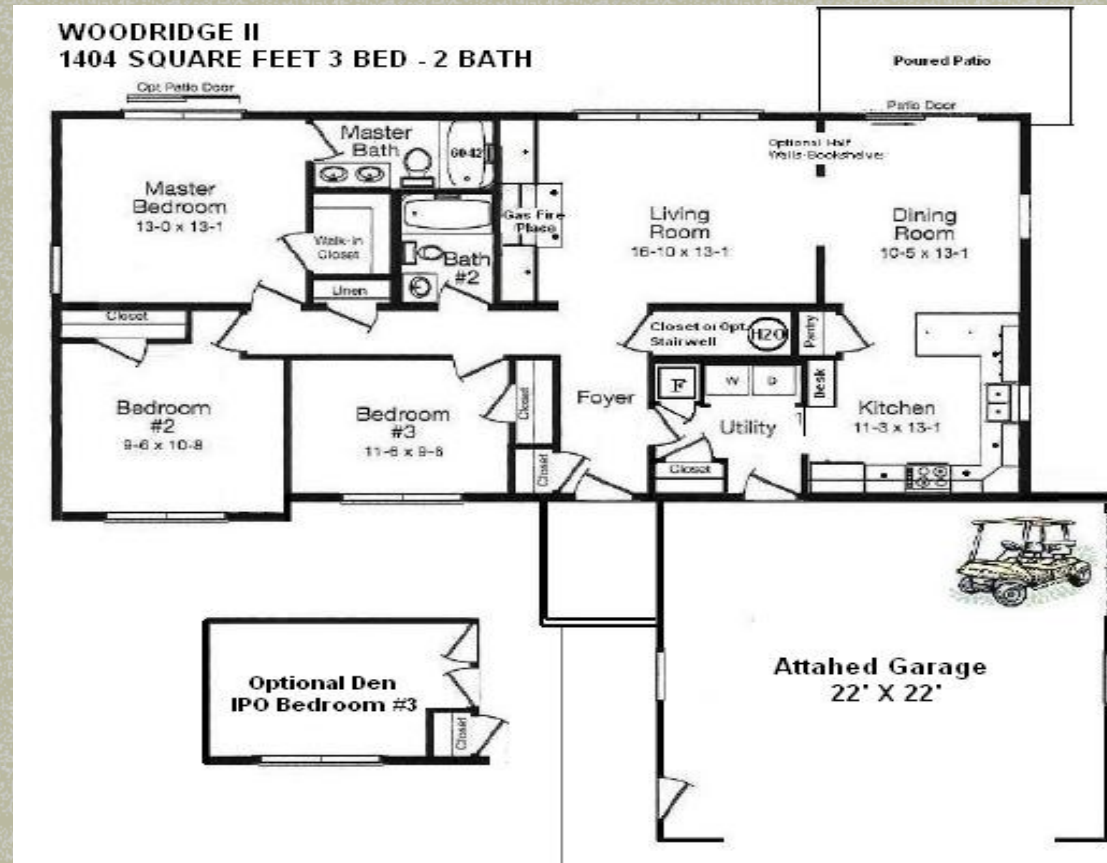
- Modern appliances
- Kitchen open to dining area
- Dine at bar or dining table



# Woodridge - Interior

## ■ Dining - part of the great room

- Dining room is next to kitchen
- All of living area has a view of the golf course







# Woodridge - Interior

- Master Bed Room – on the main floor
  - Shown with optional cedar trim
  - Full walk in closet
  - Full bath next to it





# Woodridge - Interior

## ■ Master Bath

- Off Master bedroom
- Large soaker tub w/Shower
- Double sink
- Closet for linens







# Woodridge – Interior (lower level)

## ■ Optional Lower Level Bedroom #4

- Sleeps 4
- Optional Large windows
- Closet






# Woodridge – Interior (lower level)

## ■ Optional Lower Level Finished Family room

- Could Be a Great room for kids to enjoy
- Play area
- Keeps noise out of adult area
- Optional Large Daylight Windows







# Woodridge – in Winter

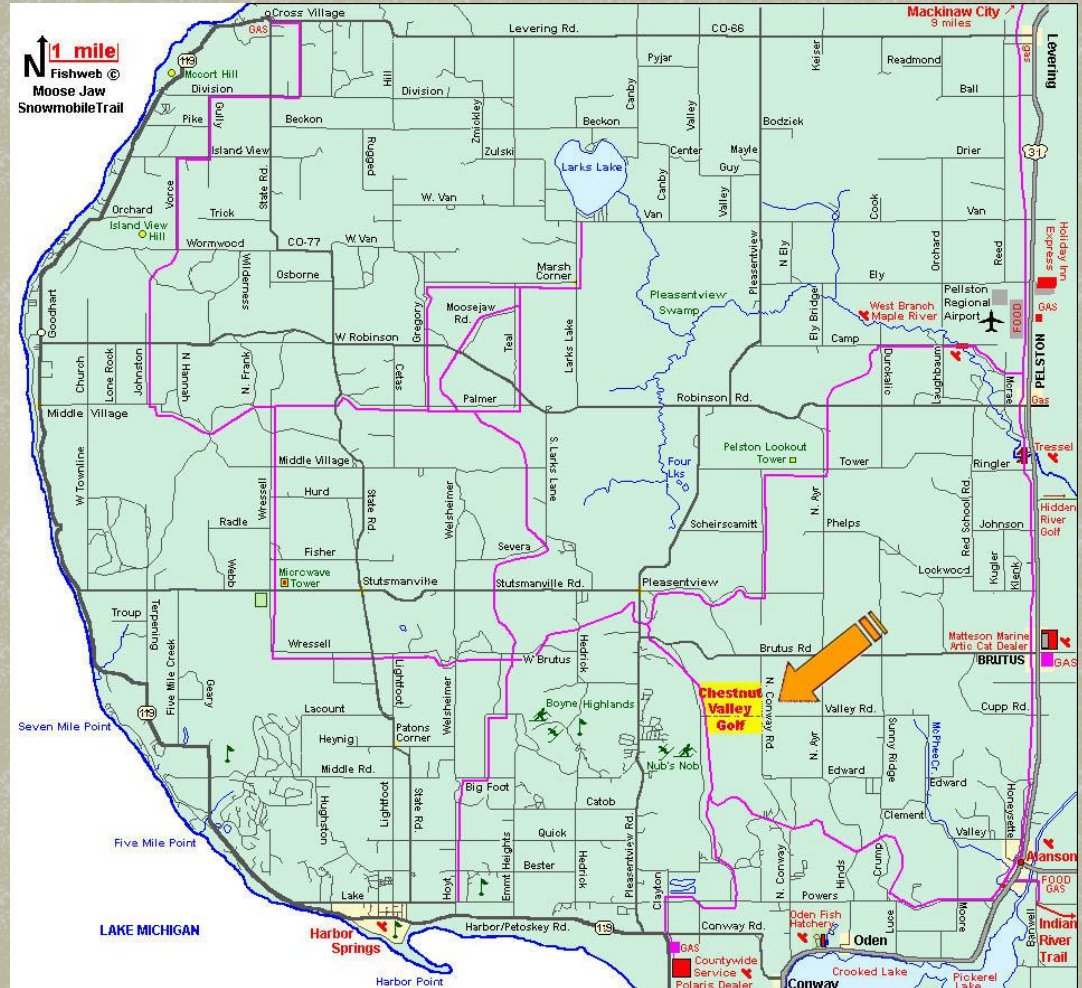
- Winter brings skiing & snowmobiling
  - X-Country ski trails on the golf course
  - Snowmobile trails run next to Chestnut Valley
  - Clubhouse is open all year long



# Snowmobiling Emmet County

## ■ Moose Jaw Trail Map

- Traverses all over Emmet County
- Passes by Chestnut Valley
- Gas & food is available at the clubhouse







# Chestnut Valley Golf

## ■ From the 8<sup>th</sup> Green

- The development looks on
- Grab your clubs & go





# Chestnut Valley Golf

## ■ The 'Nut' is a fun course!

- 18 hole
- Tree-lined
- Somewhat challenging
- Not boring
- Still fun for novice
- Hole 11 shown here







# Chestnut Valley Golf

## ■ Inside Clubhouse

- Casual drinks & dining
- Great Up-North feel





# Chestnut Valley Golf

## ■ Clubhouse

- Fireplace in dining room
- Warm up to the pleasure of the north!







# Chestnut Valley Golf

## ■ Clubhouse

- Log building to match the environment
- All homes at Chestnut Valley are log or log-sided
- Gives the course a Up-North feel





# Chestnut Valley Golf

## ■ Chestnut tree

- Chestnut Valley was named after this tree
- Next to the 10<sup>th</sup> hole

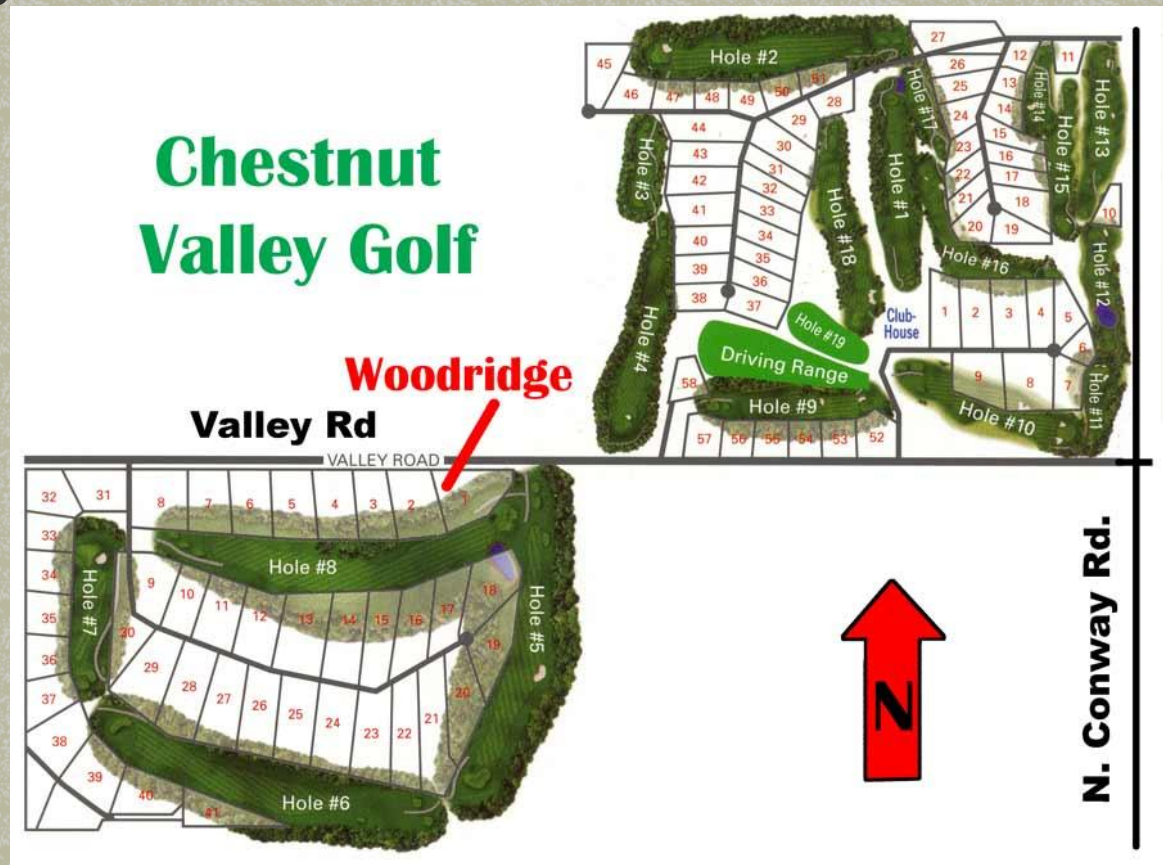




# Woodridge at Chestnut Valley

## ■ On Valley Road

- Main road that splits the course
- Easy to get to
- On the 8<sup>th</sup> fairway





# Chestnut Valley Golf

## ■ Located for convenience

- Located between Harbor Springs & Petoskey
- Close to Boyne Highlands & Nubs Nob
- Close to beaches
- Close to shopping
- Close to boating in many nearby lakes







# Chestnut Valley Golf

- The carts are ready!
  - Are you?





# FOR MORE INFO:

- Contact Jack McCloskey

- For more info
- (231) 838-1764 (cell)
- [boynecountryhomes@gmail.com](mailto:boynecountryhomes@gmail.com)
- [www.Woodridgeatchestnutvalleygolf.com](http://www.Woodridgeatchestnutvalleygolf.com)